



K12
Architects

K12 Architects, Inc
3090 Fite Circle, #104
Sacramento, CA 95827
PH:(916) 455-6500 FAX:(916) 455-8100

CONSULTANTS:

CONTRACTOR:

PROJECT:

**FIDDYMENT
PLAZA**

**NEW CONVENIENCE STORE
WITH FUELING,
SHELL RETAIL TENANT SPACE**



**4701 Fiddymnt Road
Roseville, California 95747**

DEVELOPER:

**DHILLON AND SONS
ENTERPRISES**

**201 Bellingham ct
Lincoln, CA 95648**

REVISIONS:

PROFESSIONAL SEALS:



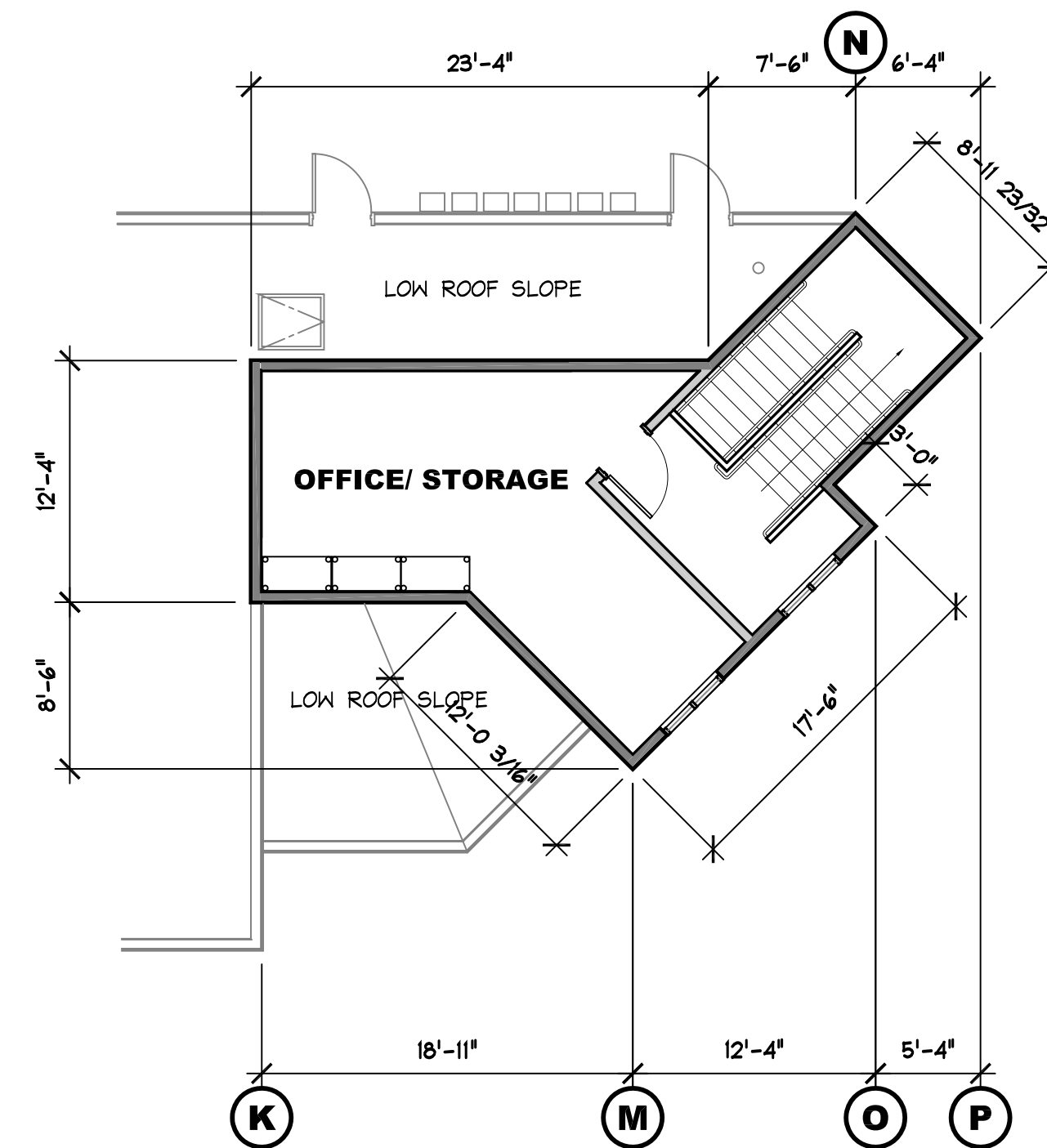
PROJECT NUMBER: **16-021** PROJECT DATE: **8-10-2018**

SHEET CONTENTS:

**OVERALL
FLOOR PLAN**

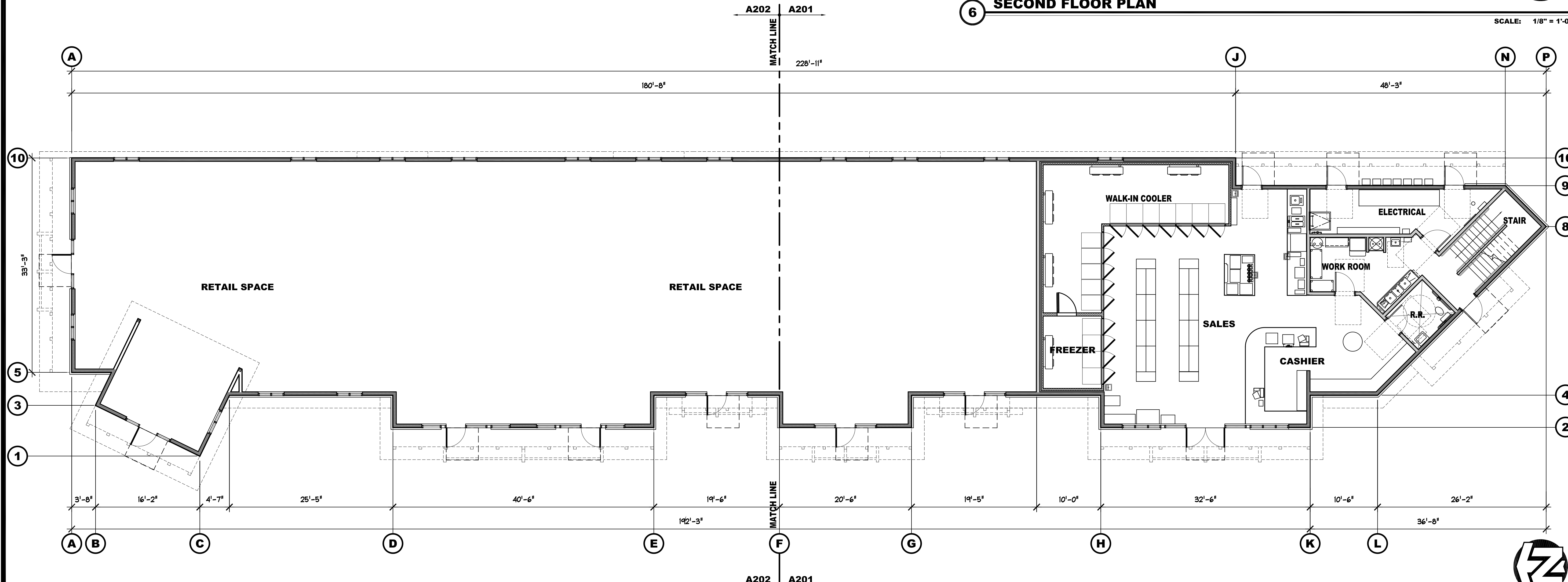
SHEET NUMBER:

A200



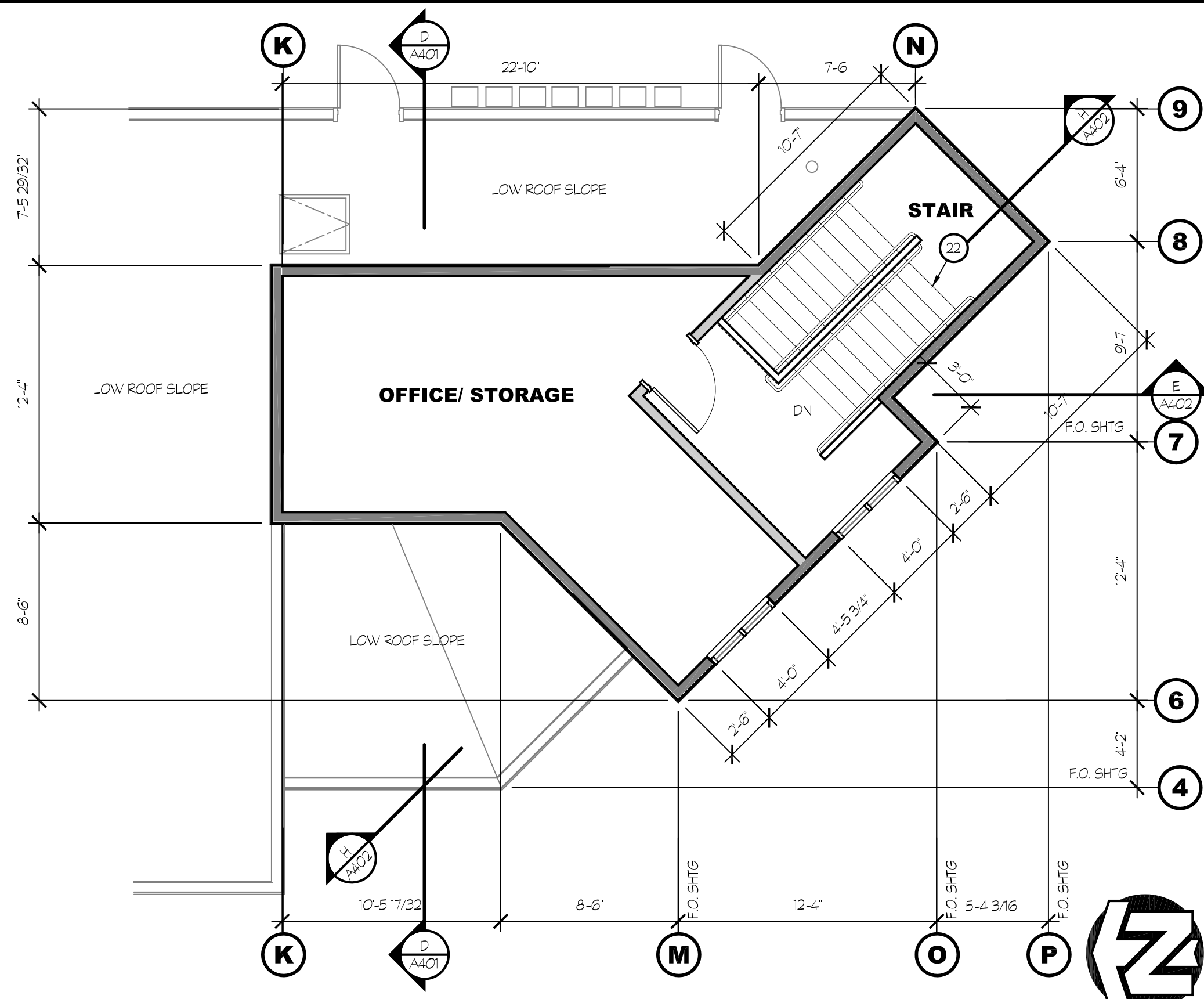
6 SECOND FLOOR PLAN

SCALE: 1/8" = 1'-0"



20 OVERALL FLOOR PLAN

SCALE: 1/8" = 1'-0"

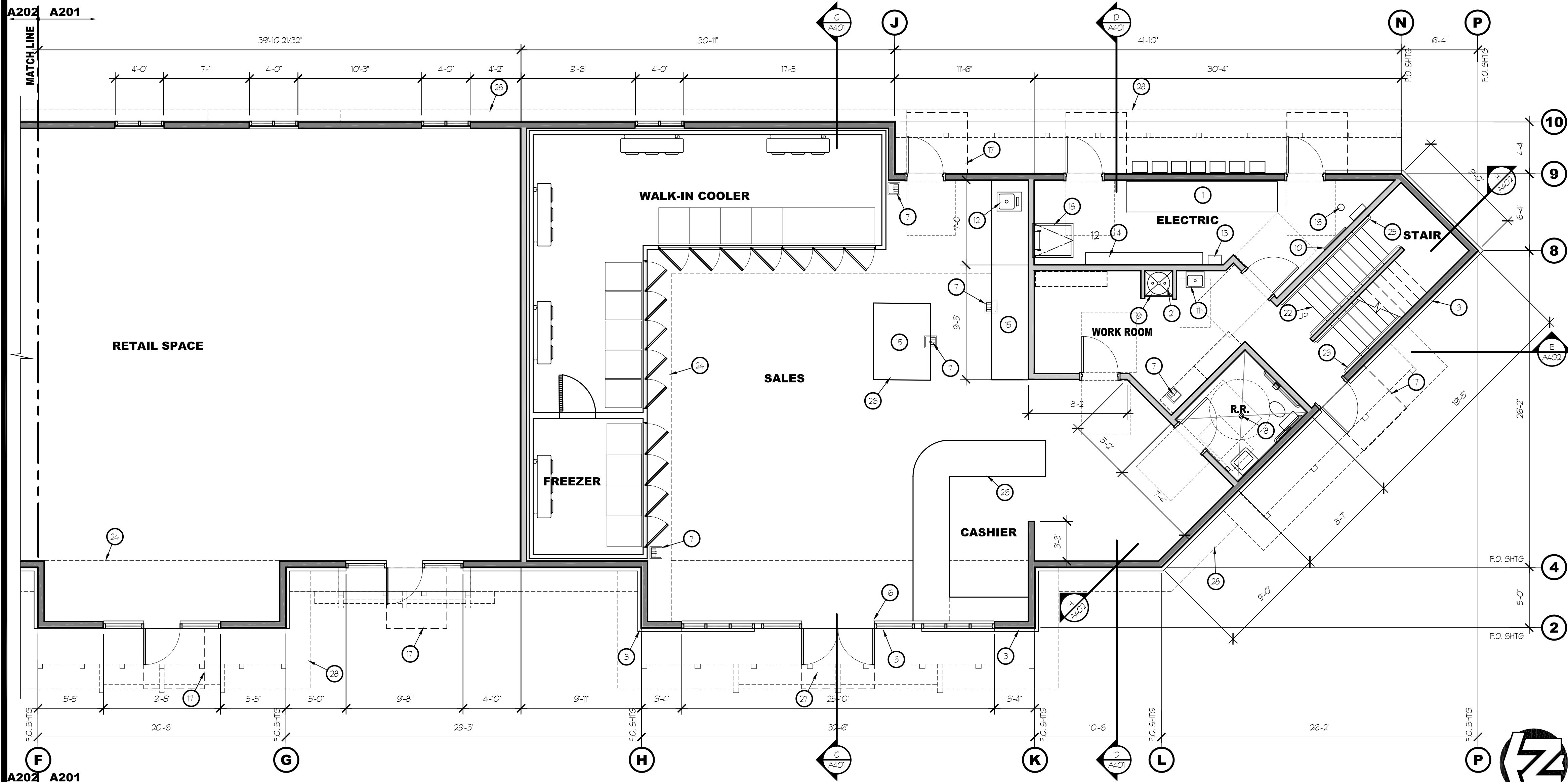


10 SECOND FLOOR PLAN

SCALE: 3/16" = 1'-0"

KEY NOTES

- 1 ELECT MSB
- 2 (1) 2A10BC FIRE EXTINGUISHER- MOUNT IN RECESSED CABINET ON WALL. CABINET TO BE LOCKABLE
- 3 STONE WAINSCOT WITH WATER SILL- SEE SHEETS A301 AND A302 FOR TYPE AND COLOR
- 4 ELECTRICAL PANELS- SEE ELECTRICAL DRAWINGS
- 5 INTERNATIONAL SIGN OF ACCESSABILITY DECAL, MOUNTED TO GLAZING
- 6 INSTALL TACTILE EXIT SIGN TO GLAZING AT INTERIOR OF DOOR. ALIGN EXIT SIGN WITH INTERNATIONAL ACCESSIBILITY DECAL
- 7 FLOOR SINK
- 8 FLOOR DRAIN
- 9 MOP SINK
- 10 TELEPHONE TERMINAL BACKBOARD
- 11 WALL HUNG HAND SINK
- 12 COUNTER MOUNTED HAND SINK, W/ SOAP & TOWEL DISP.
- 13 T15-350 FUEL PANEL, W/ REMOTE ALARM AT CASHIER
- 14 WATER FILTER AT +7'-6" AFF
- 15 REFER TO SHEET A204 FOR EQUIPMENT FLOOR PLAN
- 16 FIRE RISER FOR SPRINKLERS
- 17 60"x80" LEVEL LANDING AT EXTERIOR DOOR- 24" CLEAR TO SWING SIDE OF DOOR, SLOPED NO MORE THAN 2% IN EITHER DIRECTION.
- 18 ROOF LADDER
- 19 FIRE ALARM CONTROL PANEL (FACP)
- 20 COUNTER FOR EQUIPMENT
- 21 WATER HEATER ABOVE MOP SINK
- 22 INSTALL VISUAL STRIPPING AT TOP & BOTTOM TREADS.
- 23 HANDRAIL - EXTEND 12" PAST NOSING OF TOP TREAD
- 24 SOFFIT LINE ABOVE
- 25 HANDRAIL - EXTEND ONE TREAD WIDTH & 12" PAST BOTTOM TREAD.
- 26 CABINETS BY OWNER, TO BE +34" ABOVE FINISHED FLOOR
- 27 72"x60" LEVEL LANDING AT EXTERIOR DOOR- 24" CLEAR TO SWING SIDE OF DOOR, SLOPED NO MORE THAN 2% IN EITHER DIRECTION.
- 28 LINE OF ROOF OVERHANGS



20 ENLARGED FLOOR PLAN

SCALE: 3/16" = 1'-0"



K12 Architects, Inc
3090 Fite Circle, #104
Sacramento, CA 95827
PH:(916) 455-6500 FAX:(916) 455-8100

CONSULTANTS:

CONTRACTOR:

PROJECT:

FIDDYMENT PLAZA

NEW CONVENIENCE STORE WITH FUELING, SHELL RETAIL TENANT SPACE

**4701 Fiddymnt Road
Roseville, California 95747**

DEVELOPER:

DHILLON AND SONS ENTERPRISES

**201 Bellingham ct
Lincoln, CA 95648**

REVISIONS:

PROFESSIONAL SEALS:



PROJECT NUMBER: **16-021** PROJECT DATE: **8-10-2018**

SHEET CONTENTS:

ENLARGED FLOOR PLAN

SHEET NUMBER:

A201



K12
Architects

K12 Architects, Inc
3090 Fite Circle, #104
Sacramento, CA 95827

PH:(916) 455-6500 FAX:(916) 455-8100

CONSULTANTS:

CONTRACTOR:

PROJECT:

**FIDDYMENT
PLAZA**

**NEW CONVENIENCE STORE
WITH FUELING,
SHELL RETAIL TENANT SPACE**

**4701 Fiddymnt Road
Roseville, California 95747**

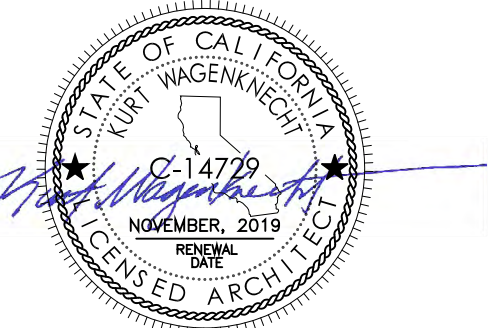
DEVELOPER:

**DHILLON AND SONS
ENTERPRISES**

**201 Bellingham ct
Lincoln, CA 95648**

REVISIONS:

PROFESSIONAL SEALS:



PROJECT NUMBER: **16-021** PROJECT DATE: **8-10-2018**

SHEET CONTENTS:

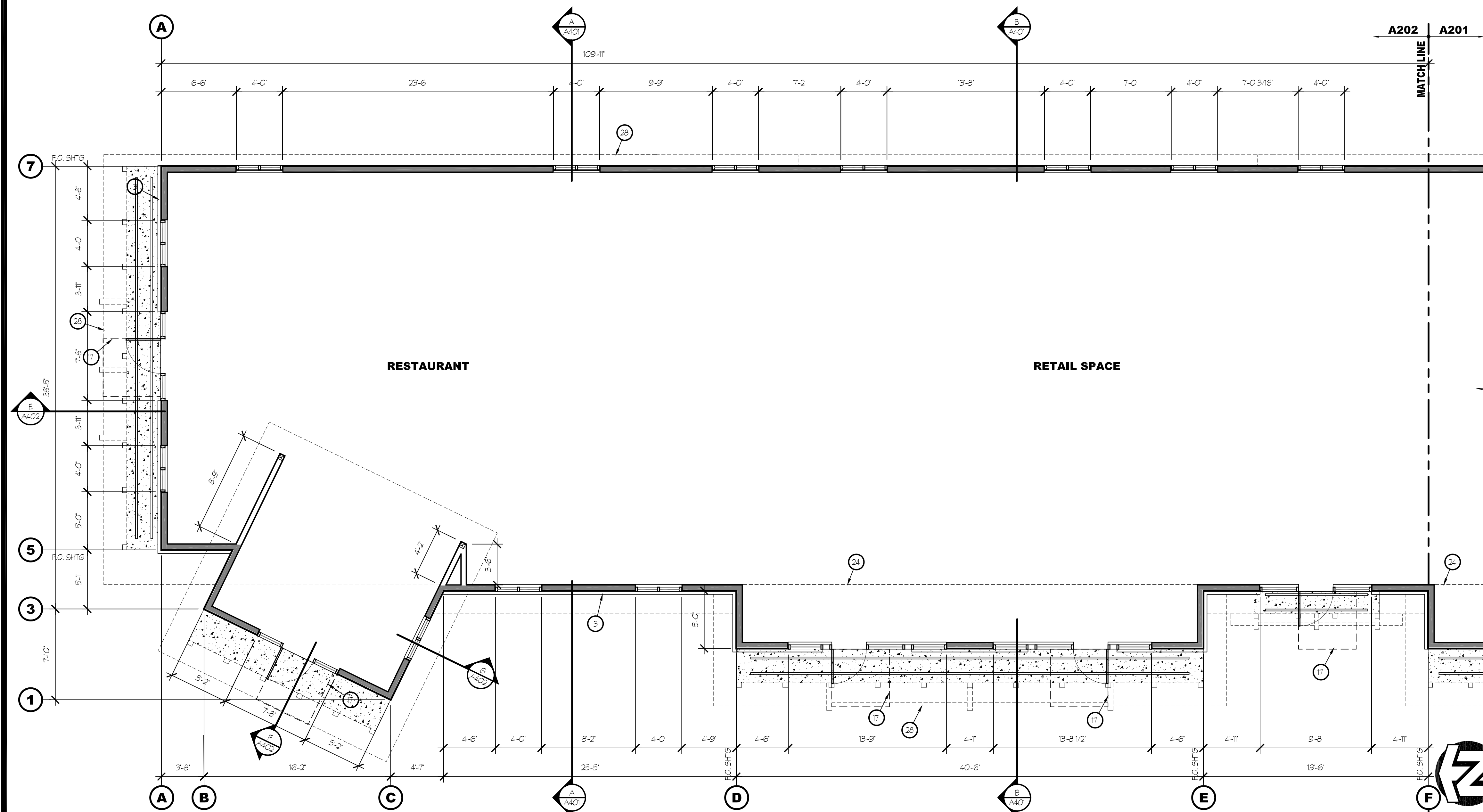
**ENLARGED
FLOOR PLAN**

SHEET NUMBER:

A202

KEY NOTES

- 1 ELECT MSB
- 2 (1) 2A10BC FIRE EXTINGUISHER- MOUNT IN RECESSED CABINET ON WALL. CABINET TO BE LOCKABLE.
- 3 STONE WAINSCOT WITH WATER SILL- SEE SHEETS A301 AND A302 FOR TYPE AND COLOR
- 4 ELECTRICAL PANELS- SEE ELECTRICAL DRAWINGS
- 5 INTERNATIONAL SIGN OF ACCESSABILITY DECAL, MOUNTED TO GLAZING
- 6 INSTALL TACTILE EXIT SIGN TO GLAZING AT INTERIOR OF DOOR. ALIGN EXIT SIGN WITH INTERNATIONAL ACCESSIBILITY DECAL.
- 7 FLOOR SINK
- 8 FLOOR DRAIN
- 9 MOP SINK
- 10 TELEPHONE TERMINAL BACKBOARD
- 11 WALL HUNG HAND SINK
- 12 COUNTER MOUNTED HAND SINK, W/ SOAP & TOWEL DISP.
- 13 T15-350 FUEL PANEL, W/ REMOTE ALARM AT CASHIER
- 14 WATER FILTER AT +7'-6" AFF
- 15 REFER TO SHEET A204 FOR EQUIPMENT FLOOR PLAN
- 16 FIRE RISER FOR SPRINKLERS
- 17 60"x80" LEVEL LANDING AT EXTERIOR DOOR- 24" CLEAR TO SWING SIDE OF DOOR, SLOPED NO MORE THAN 2% IN EITHER DIRECTION.
- 18 ROOF LADDER
- 19 FIRE ALARM CONTROL PANEL (FACP)
- 20 COUNTER FOR EQUIPMENT
- 21 WATER HEATER ABOVE MOP SINK
- 22 INSTALL VISUAL STRIPPING AT TOP & BOTTOM TREADS.
- 23 HANDRAIL - EXTEND 12" PAST NOSING OF TOP TREAD
- 24 SOFFIT LINE ABOVE
- 25 HANDRAIL - EXTEND ONE TREAD WIDTH & 12" PAST BOTTOM TREAD.
- 26 CABINETS BY OWNER, TO BE +34" ABOVE FINISHED FLOOR
- 27 72"x60" LEVEL LANDING AT EXTERIOR DOOR- 24" CLEAR TO SWING SIDE OF DOOR, SLOPED NO MORE THAN 2% IN EITHER DIRECTION.
- 28 LINE OF ROOF OVERHANG



20 ENLARGED FLOOR PLAN

A202 A201

SCALE: 3/16" = 1'-0"